

# FIRE SUPPRESSION SERVICING



We offer comprehensive maintenance and service programs for all fixed, mobile, and portable fire suppression systems. We maintain a detailed digital record for each system, ensuring you can have peace of mind and never have to worry about your fire suppression needs again.

- Experienced fire technicians for all surface and underground mining environments
- Scheduled preventative maintenance
- Fully equipped and stocked service vehicles
- Digital certificate of works for each asset
- Servicing compliant with AS 5062 and OEM specifications
- Prompt and efficient call-out service
- Onsite or exploration servicing



## SMALL FIRE ASSET SERVICING



We provide and service a complete range of fire and safety equipment that adhere to the Australian Standards, such as AS 1851 + AS 4775. We cover all fixed, underground and mobile equipment.

### Fire and Safety Equipment:

- Fire extinguishers (full range of hand held and trolley mounted)
- Heavy duty vehicle fire extinguisher brackets
- Fire blankets
- Hydrants
- Hose reels
- Lay flats
- Emergency showers & eye wash stations

### Servicing Includes:

- A barcoding system implemented to digitally record and maintain a register
- Satellite mapping of all surface locations (3m accuracy)
- Signage compliancy checks and corrections
- Annual discharge and recharge of foam, wet chemical, and trolley-mounted AFFF extinguishers
- CO2 extinguishers weighed and tested 6 monthly
- Annual flow and pressure testing conducted for layflats, emergency showers, and eye wash stations
- 6 Monthly flow and pressure testing conducted for hydrants and hose reels





# INSTALLATION & MINE SPEC FIT-OUT

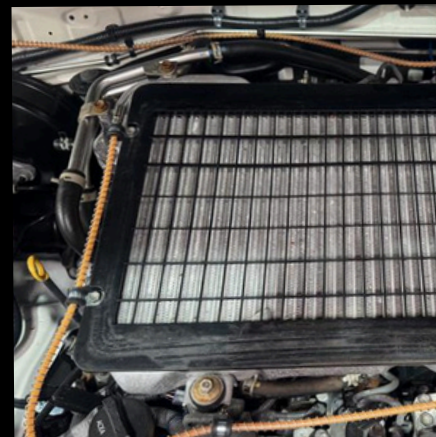
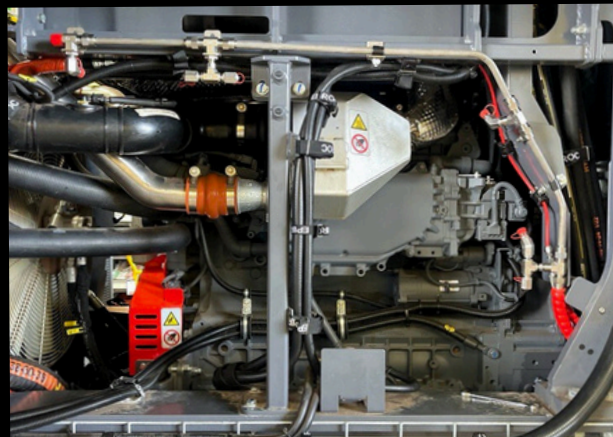


## Fire Suppression Installation:

Our installations are carried out with precision and efficiency, ensuring a neat and timely install. We customise each installation to address the specific needs of our client, emphasising usability and functionality. Our methodical approach considers both immediate and long-term requirements, with strategic placement to cover high-risk areas vulnerable to fire.

## Install Includes:

- Fire alarm and equipment shutdown panel
- Manual and automatic actuation using either Loss of Pressure (LOP), Linear Heat Detection (LHD), or Rise Of Pressure (ROP)
- Stainless steel cylinders
- Brass or stainless-steel discharge nozzles
- Stainless-steel discharge circuit
- Compact high pressure water mist systems
- Onsite or Perth based install



# INSTALLATION & MINE SPEC FIT-OUT



## Mine Spec Fit-Out:

Our mine-spec vehicle fit-outs are designed to meet the demanding requirements of mining and heavy-industrial environments. We ensure every vehicle is equipped for safety, compliance and operational performance.

- **Vehicle protection and structural upgrades** including bull bars, internal roll bars, cargo barriers and epoxy underbody rustproofing with denzo.
- **Fire suppression and safety equipment** including vehicle fire suppression systems, 9kg extinguishers with brackets, wheel chocks, first aid kit and reflective tape.
- **Electrical and lighting systems** including roof-mounted mine light bars with beacon, work lights, reverse lights, rear-facing light bars linked to reverse, spotlights or LED light bars and reverse alarm switches.
- **Communication systems** including VHF radios with antennas and UHF radios.
- **Isolation and compliance components** including battery isolators in specified locations and diff breather extensions (front and rear).
- **Visibility and monitoring enhancements** including LED mine flags, wheel nut indicators and BlackVue camera systems.
- **Interior protection and practical accessories** including canvas seat covers, heavy-duty floor mats and fitted toolboxes.
- **Tyre and wheel upgrades** with mine-approved tyres and rims.





## FIXED FIRE SYSTEM SERVICING



We offer fixed fire system servicing and installation, with a digital record kept of all work completed. We assess equipment condition, identify potential issues, and implement necessary improvements to ensure these systems remain effective and compliant with safety regulations.

### Systems include:

- Fire detections and alarm systems
- Fire indication panels
- Fire pumpsets
- Special hazard systems
- Passive fire and smoke systems
- Automatic fire sprinkler systems
- Water storage tanks

### Servicing include:

- Monthly, 6 monthly, 5 yearly and 10 yearly inspections completed
- Service according to AS1851 Australian Standards
- Prompt and efficient call-out service
- Preventative maintenance recommendations
- Provide expert recommendations to enhance system compliance

